

Bay Ridge Waterfront

182 West Lake
Annapolis, MD 21401



Vacation lifestyle waterfront in Bay Ridge w/ waterside pool & commanding water views of Lake Ogleton to the Bay Bridge. Extensive hard-scape & striking new entrance enhance this Ranch style home w/ vaulted ceilings, open floor plan, hardwood floors, stone Fireplace, main level master w/ waterside deck! LL w/ sliders, 2nd kitchen, rec room, bedroom, full bath & media room. Private pier & 75 feet of waterfront.

Georgie Berkinshaw
Certified Residential Specialist and GRI

GBerkinshaw.com | GBerkinshaw@CBMove.com

c: 443.994.4456 • Coldwell Banker Residential Brokerage • o: 410.263.8686



Annapolis Church Circle • Operated by a subsidiary of NRT, LLC



Bay Ridge Waterfront

182 West Lake Drive
Annapolis, Maryland 21403

WATERFRONT

- 75 Feet of Bulkheaded waterfront on Lake Ogleton
- 150 Ft Pier with 4 ft. MLW and ladder
- Pilings and Decking Replaced in 2003
- High Tide Lift will accommodate a 10,000 lb. boat
- Water, Electric and Lights at dock, Swim ladder
- Jet rail for Jet Ski
- Table & 4 Chairs on dock convey
- Waterskiing permitted on Lake Ogleton

POOL

- Gunite heated pool with built in Hot Tub w/ winter cover, Polaris
- 9 Ft Deep end, steps in shallow end, seating shelf by Spa
- Spa Motor replaced 2017

EXTERIOR FEATURES

- Stone surround patio
- Extensive hardscape
- Dramatic Front Entrance designed by Ted Sheils & installed in 2011
- Cedar Faced Carriage House 2 Car Electric Garage Door
- Painted drywall on ceiling & walls, side windows & shelving & cabinets
- Architectural grade shingled roof
- Oversized gutters
- Fenced yard
- 3 Exterior storage sheds attached to home
- Invisible Fence
- Picnic table in yard conveys.

MAIN LEVEL

- Custom entrance foyer with solid cherry barrel ceiling, solid cherry door with 2 side windows, stone accent wall- 2011
- Newly Painted interior 2017

- First floor living features Open floor plans, hickory wood floors, recessed lighting, kitchen w/ granite counter tops, maple cabinets, 3 Bedrooms & 2.5 baths.
- Kitchen area includes 2 tier granite island with storage shelves, under-counter lighting, 2 stainless steel sinks with disposals, & wine refrigerator added in 2007.
- Kitchenaid appliances include double oven, dishwasher, & side by side refrigerator & freezer.
- Main level also includes stone gas fireplace with mantle
- Master Bedroom features private waterside deck with glass railings, Full Bath en suite with beadboard and tile flooring, Steam shower & double sink vanity.
- Two bedrooms, which include beadboard, ceiling fans, & private closets. Full bath with skylight, tub & shower combo.
- Mud room with tile floors, 2 large closets, half bath, washer/dryer/utility sink & outside side entrance- 2011

LOWER LEVEL

- Walk out finished lower level features Recreation room with stone gas burning fireplace with Mantle
- Media/entertainment room
- Full Kitchen with refrigerator, dishwasher & stove
- One bedroom & One full bath
- Utility Room, workbench & plenty of storage.

UTILITIES

- 2 zone Heat Pump
- 2 Zone Central Air Conditioner
- Propane tank owned
- Well pump replaced in 2014
- Water Conditioner owned. Service by Mid Atlantic Water Services

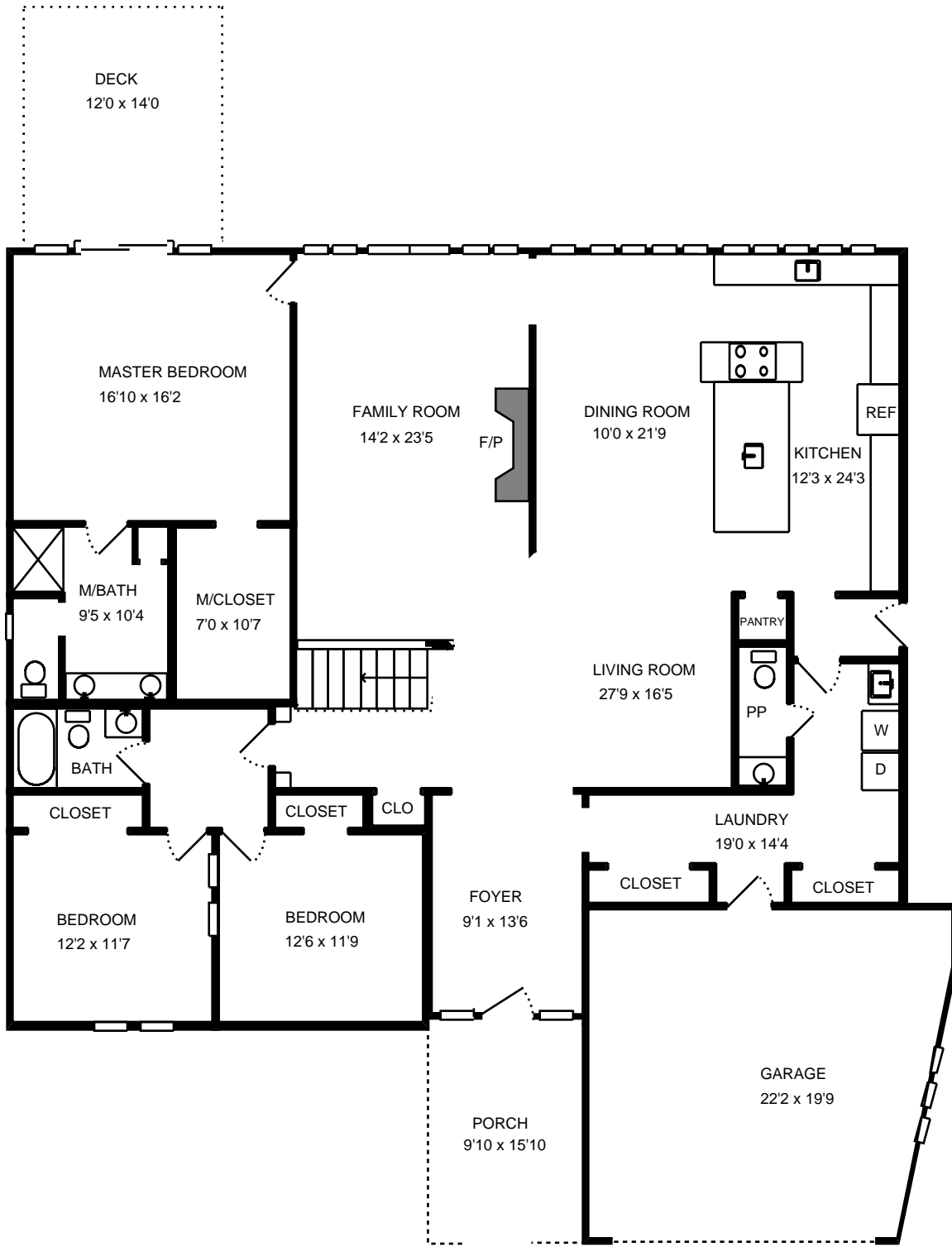
AMENITIES

- Bay Ridge is a Special Tax Assessment District.
- It is also a Voluntary HOA with an Annual Fee of \$180/year
- Optional Community Pool, marina, dinghy storage, tot lot, baseball diamond, & clubhouse.
- Please visit The Bay Ridge Community Website for more Information <http://bay-ridge.org/>



Property Address:
182 W Lake Dr
Annapolis, MD 21403

Measure #12868983



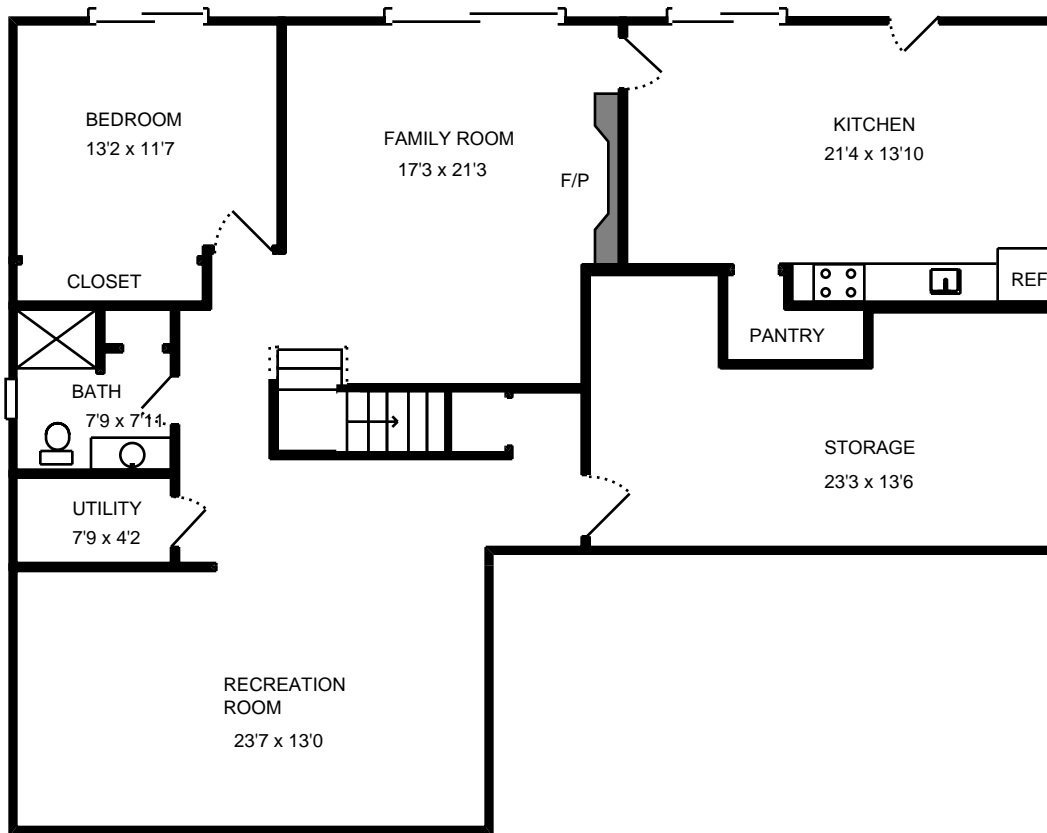
Total interior square footage on page: 2290 sf

The interior square footage listed is living space only and is not taxable square footage



Property Address:
182 W Lake Dr
Annapolis, MD 21403

Measure #12868983



Total interior square footage on page: 1649 sf

The interior square footage listed is living space only and is not taxable square footage