

Bay Ridge



9 Upshur Avenue | Annapolis, Maryland 21403

Contemporary living steps from the Mayo beach & Chesapeake Bay! Sleek kitchen with granite, wood cabinets, GE & Viking steel appliances. Oak floors, generous sized rooms. Master ensuite with focal mantle detail. Upper level loft space, skylight, vaulted ceiling & home office/5th bedroom. Lushly landscaped lot, back deck, hot tub & fire pit and parking for 8 cars.

Offered At: \$998,000



Georgie Berkinshaw

GBerkinshaw.com | GBerkinshaw@CBMove.com | C: 443.994.4456

Coldwell Banker Residential Brokerage | 4 Church Circe | Annapolis, MD | O: 410.263.8686

Operated by a Subsidiary of NRT LLC

9 Upshur Avenue
Annapolis MD 21403

EXTERIOR

- House sits back on beautifully landscaped lot
- Steps to Upshur Beach
- Fully fenced in backyard
- Private pebble driveway for 5 cars and parking pad for 3 (off-street parking for up to 8 cars)
- Mature trees and shrubbery
- Charming front porch
- Large back deck with steps leading down to large beautifully landscaped backyard
- Hot tub, 6-8 person installed in 2015
- Backyard fire pit area
- Wood siding painted 2018

FRONT FOYER

- Hardwood floors throughout first floor and stairway
- Light fixture
- Stairs that lead to upper and lower level
- Hall coat closet
- Hall half-bath with custom vanity, Ronbow sink, marble counter, and modern light fixture

KITCHEN

- All stainless-steel appliances
- Granite countertops costa esmeldra
- Large granite island with two modern hanging light fixtures
- Space for kitchen table with modern hanging light fixture
- Dark wood cabinetry with underneath accent lighting
- Recessed lighting
- 4 burner Viking Professional gas range top
- Double door GE Monogram refrigerator/freezer with water/ice dispenser
- Double GE Monogram wall ovens with touch screen
- Kenmore dishwasher
- Large basin Elkay sink with disposal
- Medium basin Elkay sink with disposal in island
- Greenhouse plant window extends outward
- Full-size pull out trash and recycling bins

LIVING ROOM

- Sits off foyer with hardwood floors

- Wood burning insert fireplace with brick surround and wood mantel, spot lighting
- Three windows with custom blinds

DINING ROOM

- Wood floors, brick accent wall
- Window with custom blinds
- Two modern hanging light fixtures

FAMILY ROOM

- Hardwood floors
- Ceiling light fan
- Windows with custom blinds
- Single side access door
- Double doors lead out to back deck and yard
- Two double door closets with shelving

UPPER LEVEL 1

- Master bedroom features, wall to wall carpet, window seat/bench, vaulted architectural ceiling with two sky lights, ceiling light/fan, mock brick fireplace accent wall with wooden outline/frame. Two wall bedside lights
- Master bedroom large walk-in closet with built in shelving, wall to wall carpet, and light fixture
- Master bath features dual sink vanity, with underneath storage, above lighting and additional light fixture, tile flooring, separate shower/toilet commode large shower/tub combo with tile surround
- Updated full hall bath with granite counter top vanity with underneath cabinetry, single sink, above modern light fixture shower/tub combo with stainless steel Kohler rain spout and tile surround
- 2nd bedroom features wall to wall carpet, ceiling light fan, window with blinds,
- Hall has carpet, one single door linen closet, and 2 double door closets for additional storage
- 3rd bedroom has wall to wall carpet, double door closet with built in shelves, vaulted ceilings, two windows with blinds, and ceiling light fan
- 4th bedroom includes wall to wall carpet, double door closet with built in shelves, vaulted ceilings, two windows with blinds, and ceiling light fan
- 2nd hall full bathroom features dual sinks with granite counter with above modern light fixtures, underneath storage, vaulted ceiling, window, shower/tub combo with tile surround

2nd UPPER LEVEL

- Wood painted hand railing with carpeted steps
- Modern light fixture hanging from above over 2nd level
- Ample window light, 3 side by side windows, 2 skylight windows, & recessed lighting.
- Center brick accent wall (Surround from fireplace)

- 5th bedroom includes wall to wall carpet, single closet, vaulted ceiling, window with blinds, and ceiling light fan

LOWER LEVEL/BASEMENT

- Unfinished
- 4 windows
- Side access door to outside
- Inverter Director Drive: true balance: Smart Drum HE Washer/ LG Dryer

UTILITIES

- Electric Power/Electric heat & AC
- Rain Soft water conditioner installed 2016
- Gas from propane tank to stove top 120-gallon tank
- Public sewage
- Well water – Re-dug 6 years ago - Added Constant pressure pump

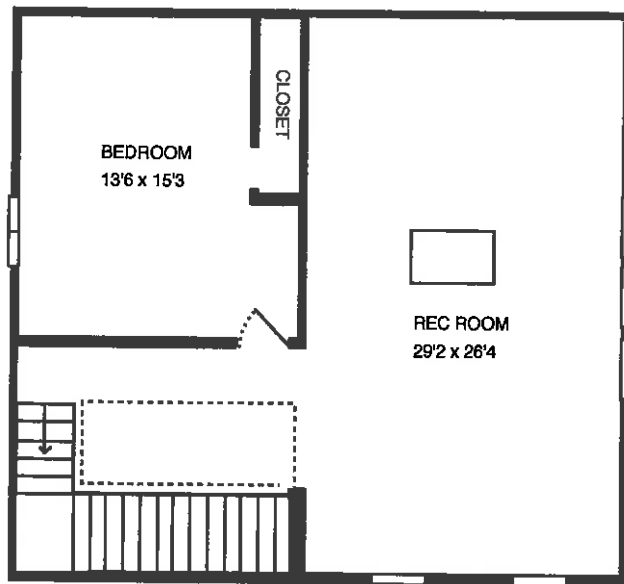
UPDATES

- Master bath updated 2015
- Main level bath updated 2014
- 2 half baths 2nd level updated 2018
- Carpet updated 2015
- Fresh paint updated 2018 1st and second level
- Kitchen updated 2014 all new appliances
- Deck redone 2015
- 2015 twilight series Master Spas

ADDITIONAL INFO

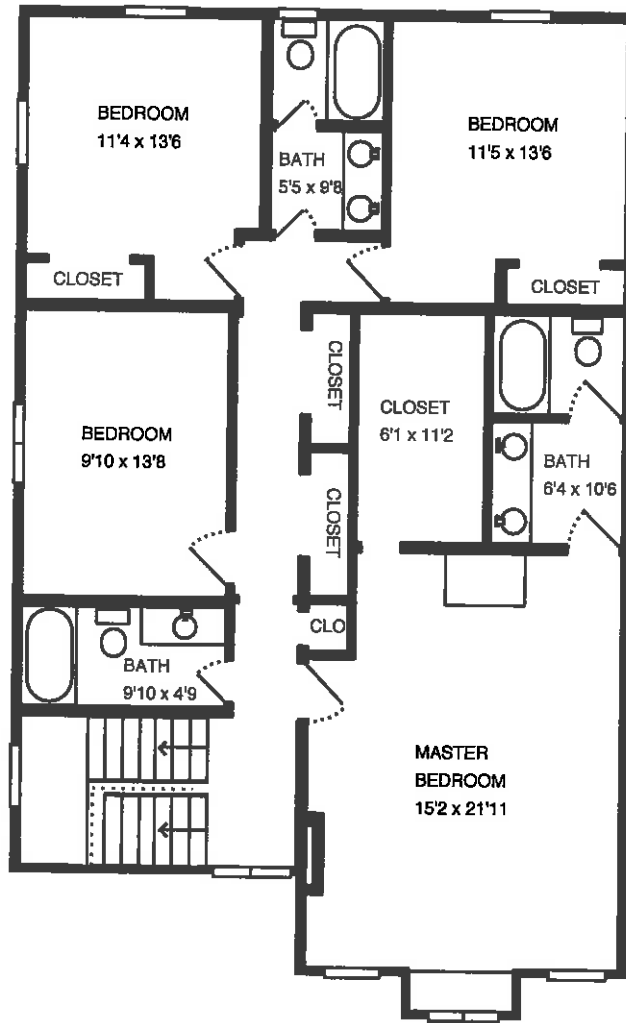
- Third floor water view
- 70 steps to beach/water on bay side of neighborhood
- Cypresses planted 6 years ago
- Landscaping

*Property Address:
9 Upshur Ave
Annapolis, MD 21403*



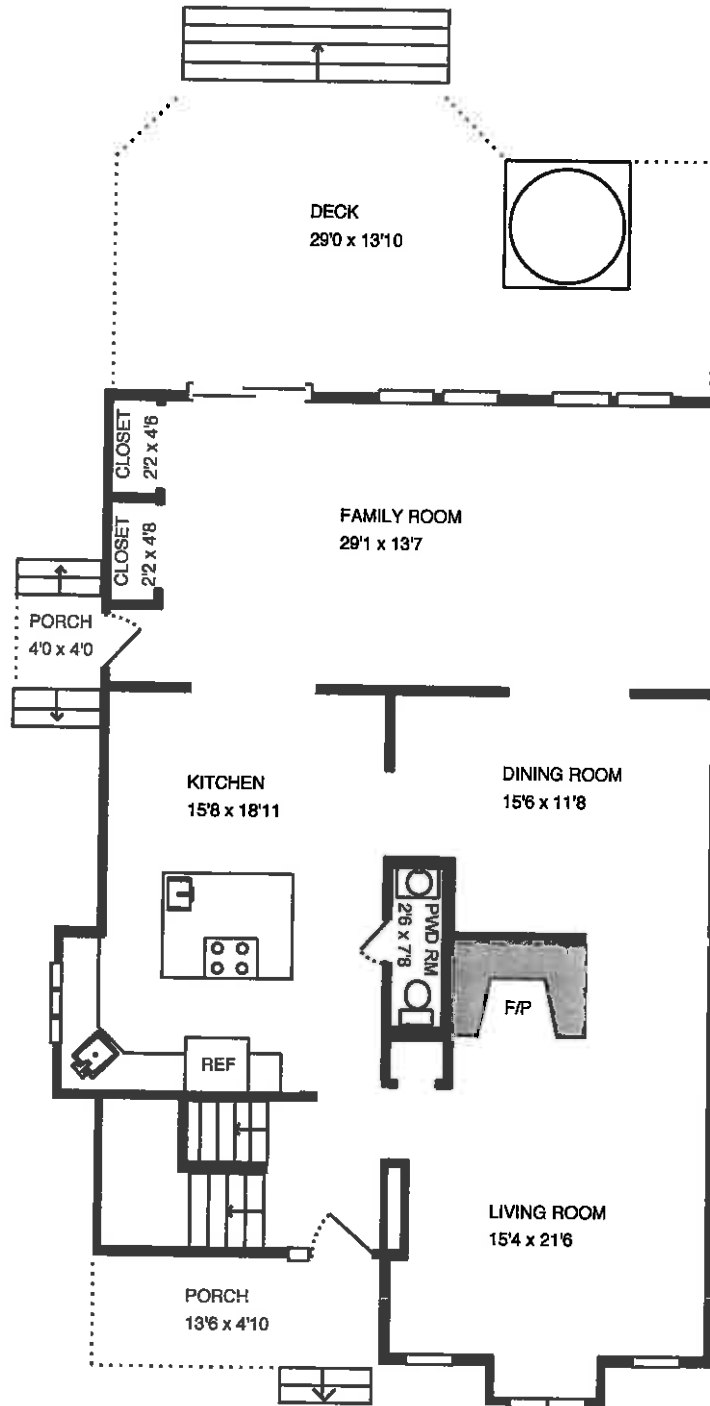
All Information is deemed reliable, but is not guaranteed

*Property Address:
9 Upshur Ave
Annapolis, MD 21403*



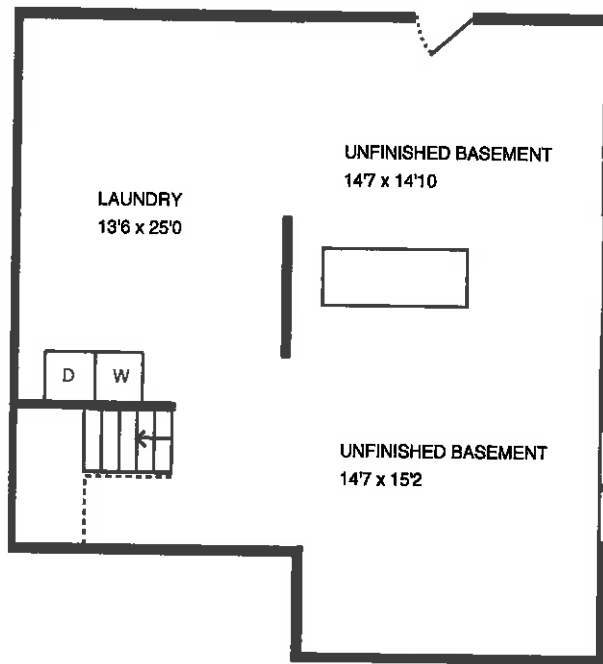
All information is deemed reliable, but is not guaranteed

Property Address:
9 Upshur Ave
Annapolis, MD 21403



All information is deemed reliable, but is not guaranteed

*Property Address:
9 Upshur Ave
Annapolis, MD 21403*



All information is deemed reliable, but is not guaranteed